



770 Derby Ave

770 Derby Ave, Seymour, CT 06483



Brian Botti
Botti Realty
368 Derby Ave, Derby, CT 06401
brian@bottirealty.com
(203) 735-9368 Ext. 201

This listing is available for viewing at loopnet.com

For additional information, please contact
John RaK at (203) 305.0180



770 Derby Ave

\$14.00 /SF/YR

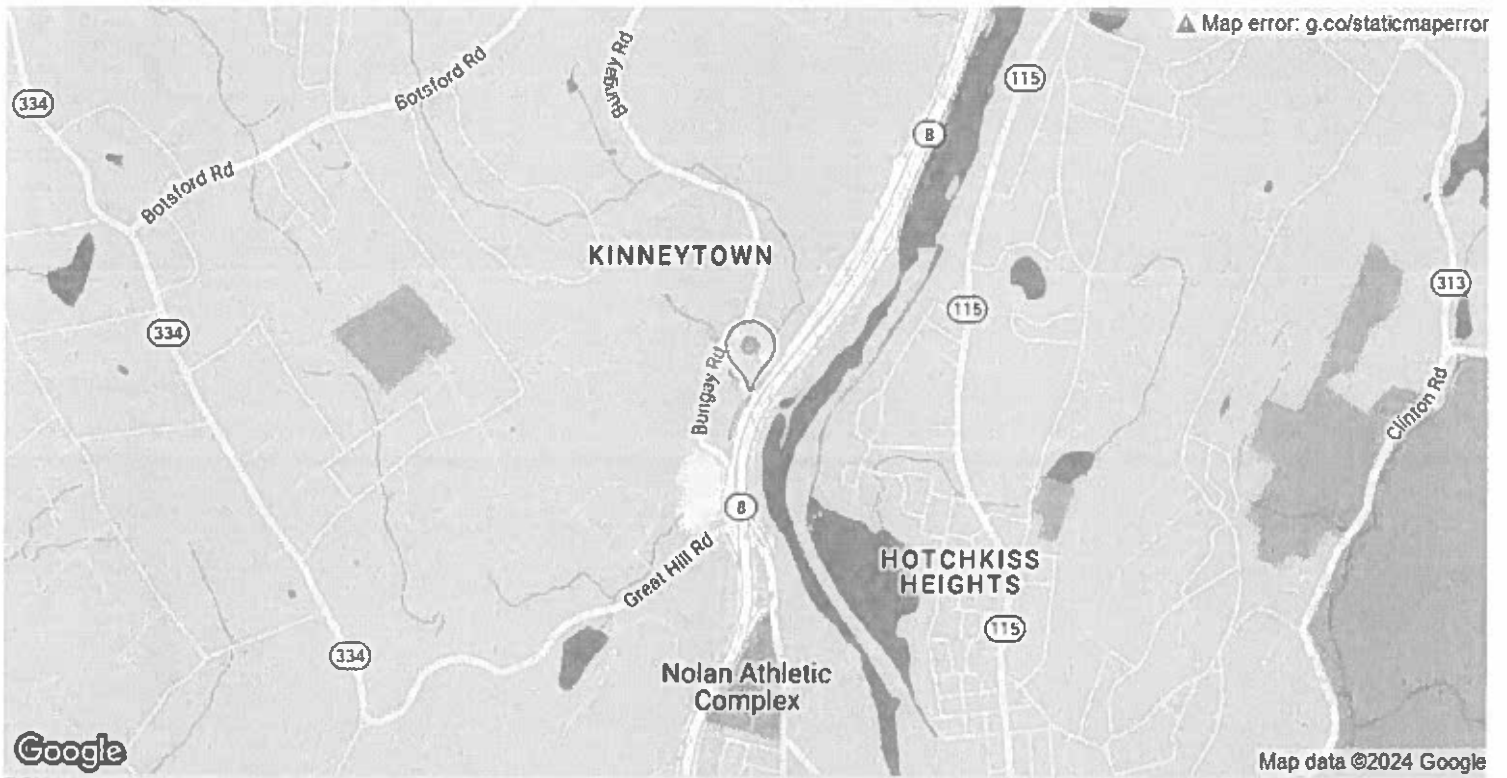
770 Derby Avenue in Seymour REAR Building can be divided into 2000sqft increments, total available 6000sqft. 28ft ceilings clear span. Total rent \$7,000 per month (plus utilities)...



1st Floor

Space Available	6,180 SF
Rental Rate	\$14.00 /SF/YR
Date Available	Now
Service Type	Plus All Utilities
Office Size	200 SF
Space Type	Relet
Space Use	Industrial
Lease Term	Negotiable

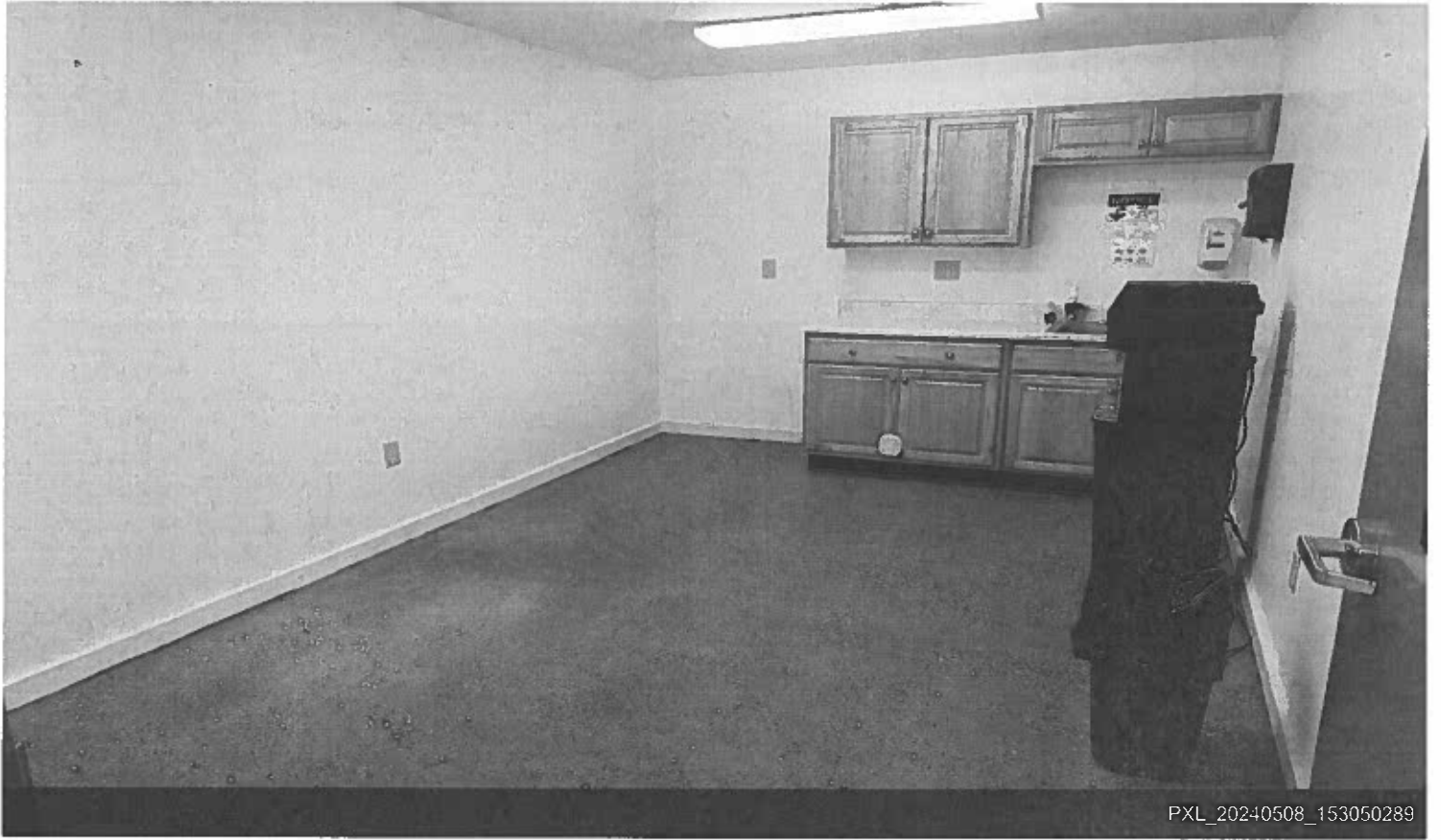
770 Derby Avenue in Seymour REAR Building can be divided into 2,000sqft increments, total available 10,000sqft. 28ft ceilings clear span



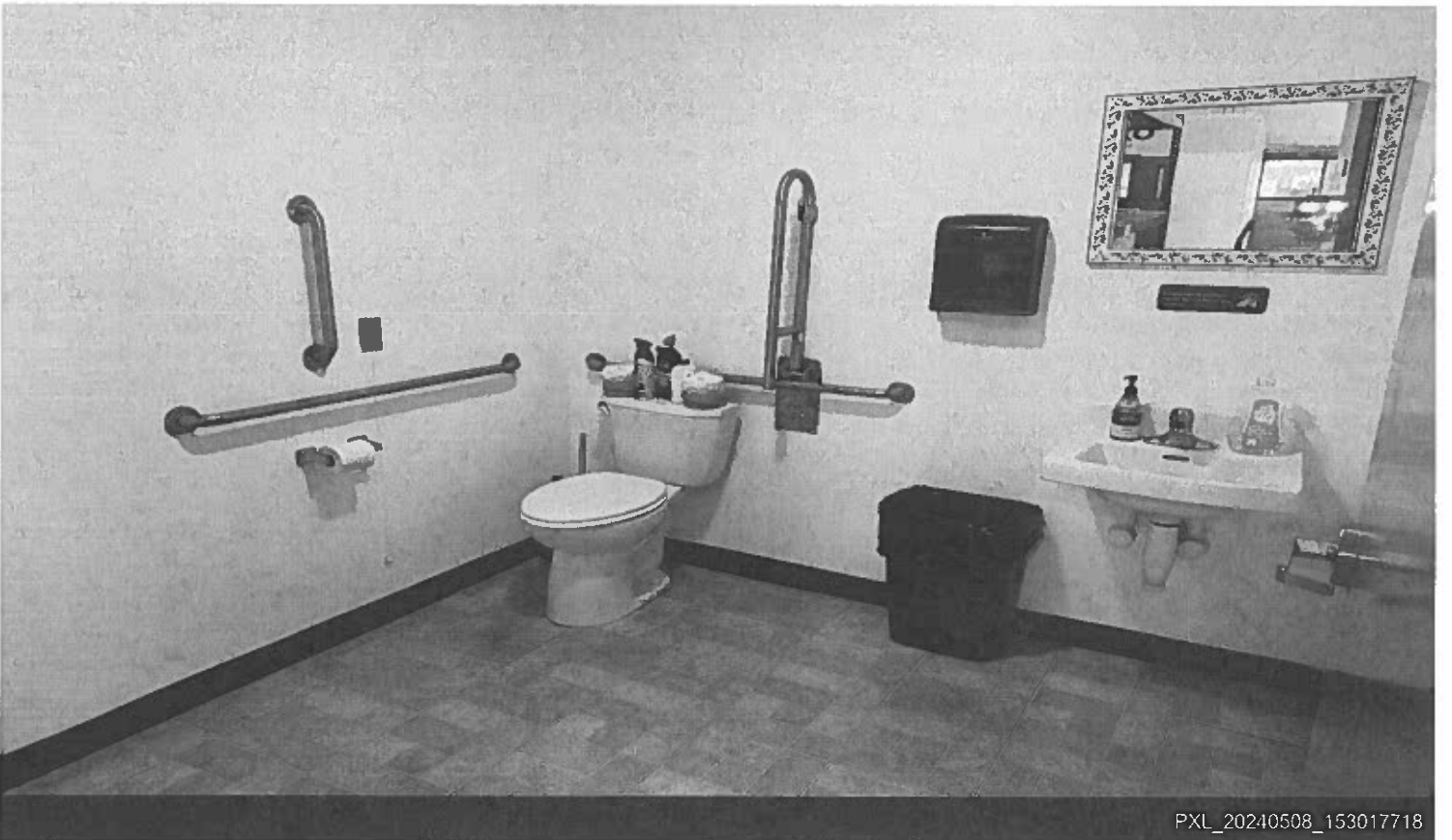
770 Derby Ave, Seymour, CT 06483

770 Derby Avenue in Seymour REAR Building can be divided into 2000sqft increments, total available 6000sqft. 28ft ceilings clear span. Total rent \$7,000 per month (plus utilities).

Property Photos



PXL_20240508_153050289



PXL_20240508_153017718

Property Photos

